

Norwich Arts Centre

Visual Story



This pack aims to support autistic people, learning disabled people, people with anxiety and people with communication difficulties.

It can be used to help them prepare for their experience at Norwich Arts Centre and to know what to expect.

Welcome to Norwich Arts Centre

The Norwich Arts Centre building is a 14th Century building which hosts music, theatre, comedy, live art and dance.

If you are visiting Norwich Arts Centre, you will need a pre-booked ticket for the show you are going to.



When you arrive, you will need to go down the path to the box office entrance. There is a door with a push button. Once you've come in, the box office will be directly in front of you.

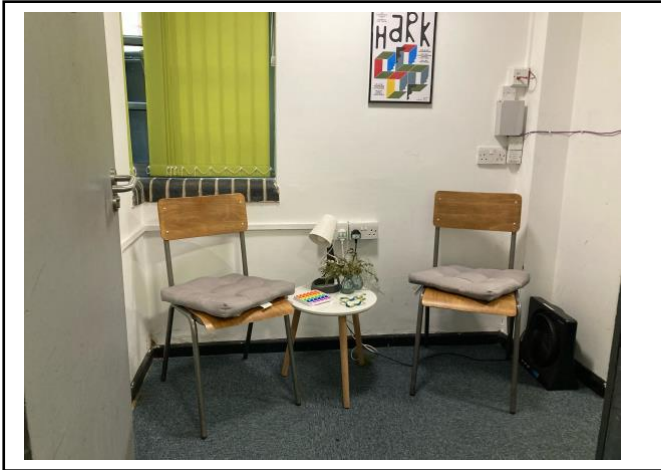
There are kind volunteers with lanyards who will scan your ticket.



This is the auditorium, where your show will be. It can be quite loud, and there are often some coloured lights.

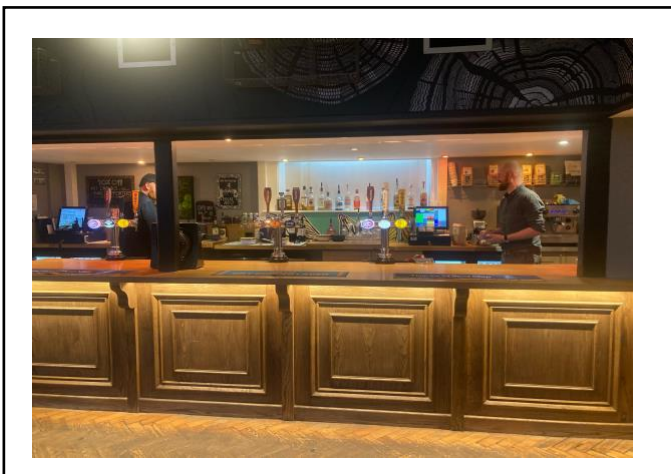
Some events are standing, and some are seated. It might be better to stand at the back if you are worried about crowds.





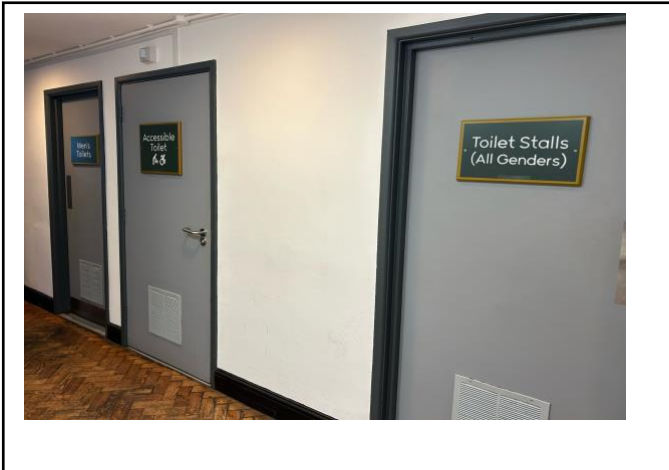
There is a quiet room available which is away from the noisy areas.

You can ask a volunteer with a lanyard to use this at any time. There are seats and fidget toys.



This is the bar area, which plays music. There are snacks and drinks there that you can buy. You can bring your own water and snacks if you prefer.





There are disabled and gender-neutral toilets downstairs. The hand dryers can be a bit noisy.

